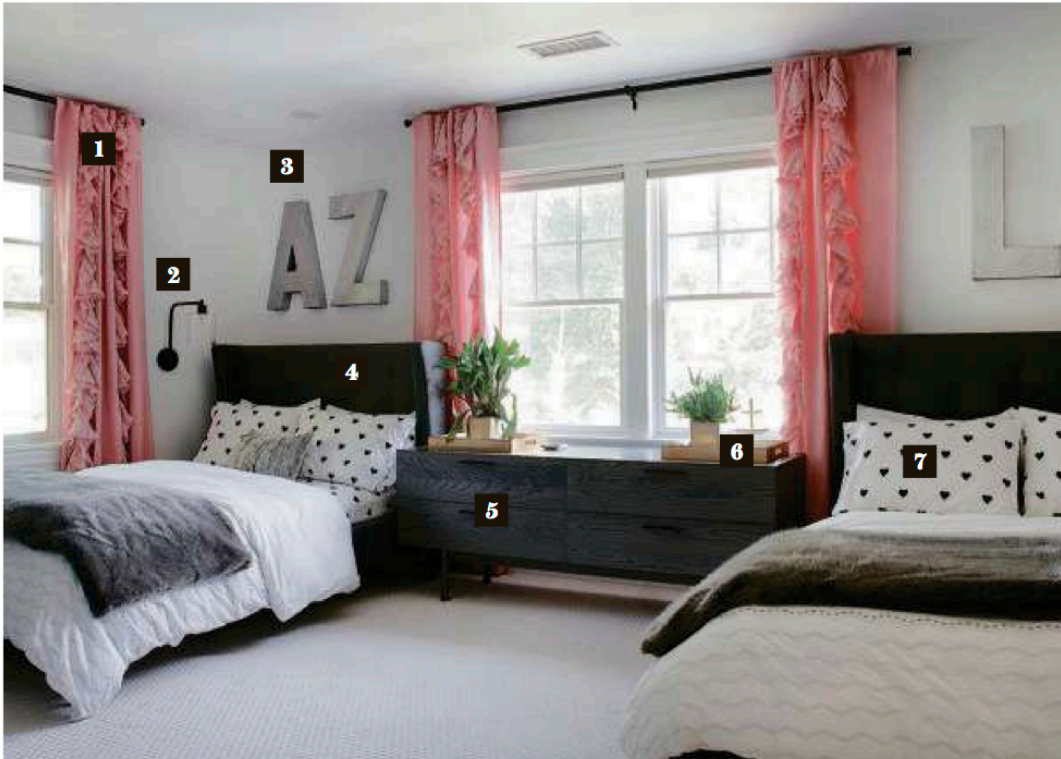


Upfront



1 The ruffled “Wandering Pleats” **curtains** from Anthropologie set the tone and draw the eye up, adding interest and color.

2 Rather than clutter the dresser with table lamps, Crestin hung West Elm “Lens” **sconces** next to the beds. The antique bronze finish echoes the curtain rods.

3 Their initials in bold, oversized zinc **letters** from Anthropologie define each girl’s space.

4 Upholstered **beds** from Land of Nod anchor the room and provide a tailored counterpoint to the frilly pink drapes. Crestin says, “They won’t outgrow the cozy yet grown-up design.”

5 The low-slung “Shale” **dresser** by Blu Dot from Lekker Home unifies the two sides of the room, provides ample storage, and doesn’t block the window.

6 Monogrammed **trays** help the girls keep trinkets contained and out of plain sight.

7 Not wanting the linens to compete with the busyness of the facing gallery wall, Crestin chose matching heart **sheets** from PBteen for both beds.

8 Juxtaposing an edgy black **wall** with feminine touches balances the room,” says Crestin. The paint color is Graphite by Benjamin Moore.

9 North Shore-based art installer Sarah Johnson assembled the **gallery wall**, which includes pieces from Minted, HomeGoods, and Etsy. “Don’t use too many different types of art,” says Crestin, “and mix in text to give the eye a break.”

10 The **seating** is repurposed from elsewhere in the house, and the faceted brass side table from Crate and Barrel adds a warm glow.

11 The fiddleleaf fig **plant** infuses life and adds height. Crestin says she loves its “lollipop fullness.”

STYLE WATCH

Junior Suite

WITH HELP FROM DESIGNER KRISTINA CRESTIN, A BEDROOM SHARED BY MARBLEHEAD TWEENS FEELS LIKE A FIRST APARTMENT.

BY MARNI ELYSE KATZ

Some siblings prefer the privacy of separate bedrooms, but the tween daughters of designer Kristina Crestin’s clients in Marblehead had more ambitious plans. The pair proposed that they sleep in one bedroom (shown here) and use the other as a hang-out space. The parents asked Crestin, who was working on other rooms in the house, to help execute the girls’ vision.

Crestin’s design assistant Mikaela Capobianco devised the idea of decorating the rooms like a twentysomething’s first apartment. Starting with the space that could accommodate two double beds, Crestin and Capobianco were inspired by scenes of New York and Audrey Hepburn in *Breakfast at Tiffany’s*. They created a room that the girls can grow into, complete with a sleeping and seating area. Crestin, based in Manchester-by-the-Sea, says: “We chose sophisticated furniture that will still be suitable in ten years and added inexpensive, girlish accessories that they can easily change over time.”

